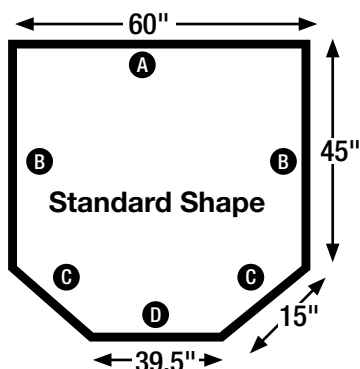


# 60" STANDARD SHAPE FRAME

American  
Panel HEARTH  
PRODUCTS

HEARTH CLASSICS  
BY American Panel

## Hearth Pad Frame Assembly Instructions



**HINT:**  
Use liquid soap  
on the plug  
ends for easy  
attaching.

### PARTS INCLUDED:

- (3) 90° angle corner plugs
- (2) 180° angle plugs (standard shape will use 1)
- (2) 11" long frame extension (standard shape will use 1)
- (4) 22.5° angle corner plugs (corner shape will use 2)
- (4) Frame pieces at approximately 45" long
- (1) Frame piece at approximately 39.5" long  
(used in standard shape only)
- (2) Frame pieces at approximately 15" long  
(corner shape will use 1)

**\*NOTE:** You may want to remove thick carpet/padding.

### STEPS 1 - 2

To create one 60" frame piece (A), connect together (1) 45" frame piece, (1) 180° angle plug, and (1) 11" frame extension.

### STEPS 3 - 4

With a 90° angle corner plug, attach the open end of the 60" frame piece (A) and one 45" frame piece (B).

### STEPS 5 - 6

Using another 90° angle corner plug, take the remaining 45" frame piece (B) and attach to the open end of the 60" frame piece (A).

### STEPS 7 - 8

With a 22.5° angle corner plug, attach one 15" frame piece (C) to the open end of the 45" frame piece (B). Then repeat on the other side (C & B).

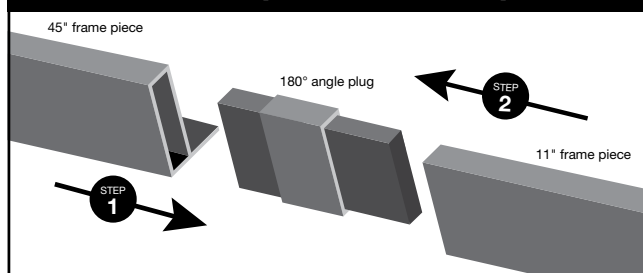
### STEPS 9 - 10

Finish the frame by attaching the 39.5" frame piece (D) to the 22.5° angle corner plugs.

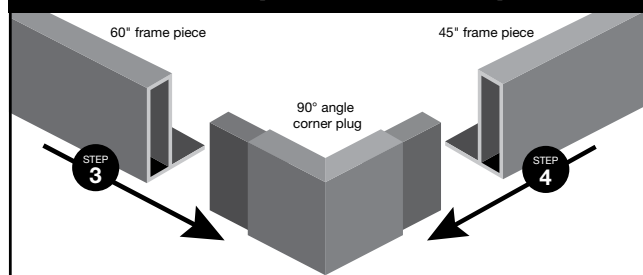
### LAST STEP

Take care to make sure all corner plugs are inserted completely in the frame piece.

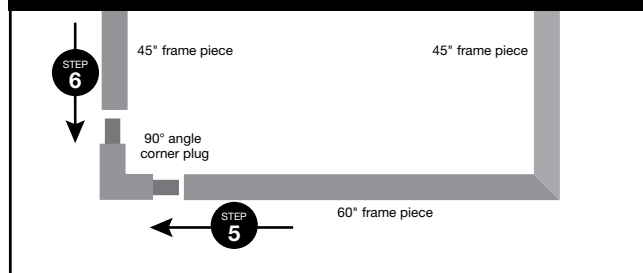
### Standard Shape Frame - Steps 1 - 2



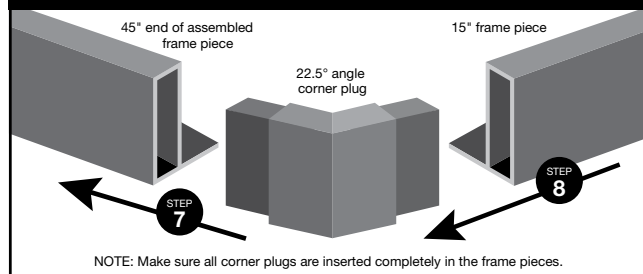
### Standard Shape Frame - Steps 3 - 4



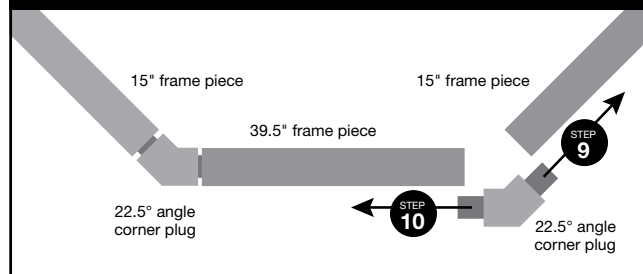
### Standard Shape Frame - Steps 5 - 6



### Standard Shape Frame - Steps 7 - 8



### Standard Shape Frame - Steps 9 - 10



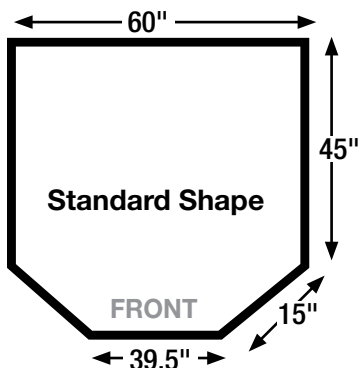
# 60" STANDARD SHAPE SUBSTRATES

American  
Panel HEARTH  
PRODUCTS

HEARTH CLASSICS

BY American Panel

## Hearth Pad Substrate Assembly Instructions



### STANDARD SHAPE SUBSTRATES

#### MICORE 300 INCLUDED:

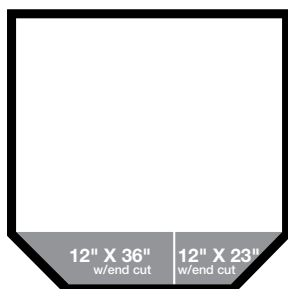
- (4) – 12" x 23" rectangle pieces
- (4) – 12" x 36" rectangle pieces
- (1) – 12" x 23" rectangle piece with one end cut at 45°
- (1) – 12" x 36" rectangle piece with one end cut at 45°
- (1) – Tube of silicone
- (1) – Triangle piece (used in corner shape only)

#### CEMENT BOARD INCLUDED:

- (3) – 12" x 23" rectangle pieces
- (3) – 12" x 36" rectangle pieces
- (1) – 6" x 36" rectangle piece
- (1) – 6" x 23" rectangle piece
- (1) – 12" x 23" rectangle piece with one end cut at 45°
- (1) – 12" x 36" rectangle piece with one end cut at 45°
- (1) – 6" x 14" rectangle piece with one end cut at 45°
- (1) – 6" x 32" rectangle piece with one end cut at 45°
- (1) – Triangle piece (used in corner shape only)

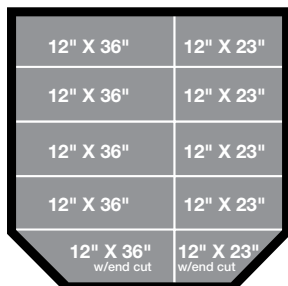
### #1 MICORE 300 SUBSTRATE

(this is ½" thick and slightly softer of the two substrates)



#### STEPS 1 - 2

While positioned in front of the hearth pad (double top will be in front of your knees), lay in side-by-side (1) 12" x 36" rectangle piece with one end cut and (1) 12" x 23" rectangle piece with one end cut.

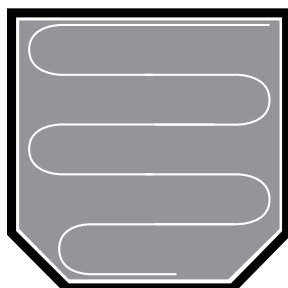


#### STEPS 3 - 4

Lay in side-by-side (4) 12" x 36" rectangle pieces and (4) 12" x 23" rectangle pieces.

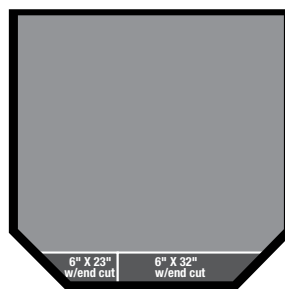
#### LAST STEPS

Run a bead of silicone around the outside edge and inside of the frame. Make several elongated "S" movements across all of the Micore 300.



### #2 CEMENT BOARD SUBSTRATE

(this is ¼" thick and the harder of the two substrates)



#### STEPS 1 - 2

Starting from left to right and running from front to back, lay in side-by-side (1) 6" x 14" rectangle piece with one end cut and (1) 6" x 32" rectangle piece with one end cut.

#### STEPS 3 - 4

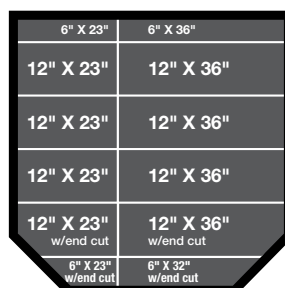
Lay in side-by-side (1) 12" x 23" rectangle piece with one end cut and (1) 12" x 36" rectangle piece with one end cut.

#### STEPS 5 - 6

Lay in side-by-side (3) 12" x 23" rectangle pieces and (3) 12" x 36" rectangle pieces.

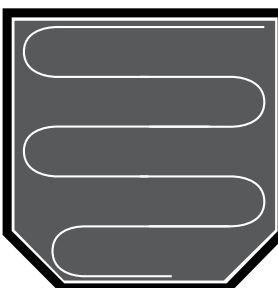
#### STEPS 7 - 8

Lay in side-by-side (1) 6" x 23" rectangle piece and (1) 6" x 36" rectangle piece.



#### LAST STEPS

Run a bead of silicone around the outside edge and inside of the frame. Make several elongated "S" movements across all of the cement board.



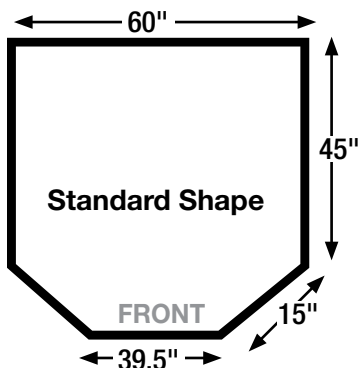
# 60" STANDARD SHAPE MODULAR PANELS

American  
Panel HEARTH  
PRODUCTS

HEARTH CLASSICS

BY American Panel

## Hearth Pad Modular Panels Assembly Instructions



### PARTS INCLUDED:

- (5) 12" x 48" modular panels
- (1) 12" x 48" modular panel with one end cut at 45°
- (1) 12" x 12" modular panel (used in corner shape only)
- (1) Triangle shape modular panel (used in standard shape only)
- (4) Load spreading disc (for appliances using legs or leveling bolts)

(5) 12" X 48" modular panels



12" X 48" with the end cut



triangle

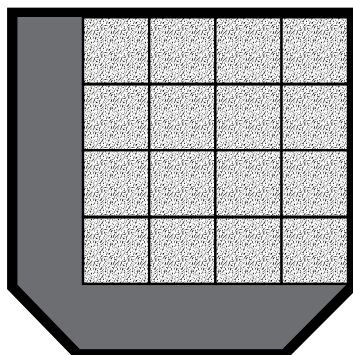
12" X 12"



### STANDARD MODULAR PANELS

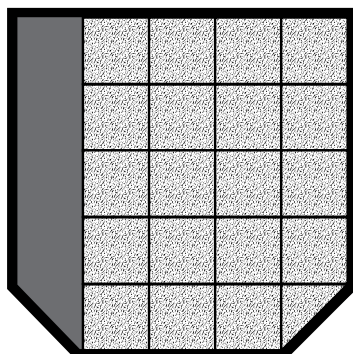
#### STEP 1

While positioned in front of the hearth pad frame (double lip will be in front of your knees), lay in (4) 12" x 48" modular panels starting from back to front and running left to right.



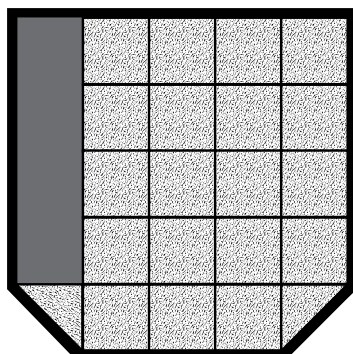
#### STEP 2

Lay in (1) 12" x 48" modular panel with one end cut - only one way this will go into frame.



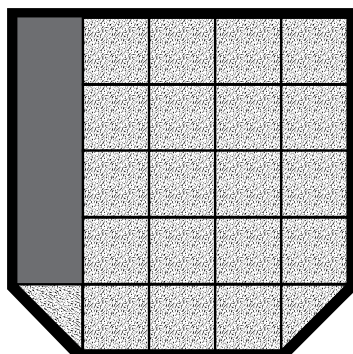
#### STEP 3

Lay in the triangle shape modular panel in the open area located at the bottom left corner.



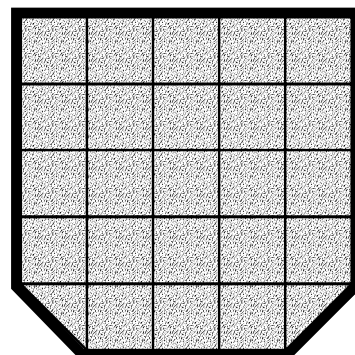
#### STEP 4

Lay in remaining 12" x 48" modular panel - only one way this will go into frame.



#### STEP 5

Square up the hearth pad taking care to make sure the tile lines are straight and modular panels are pushed to center. This may create a small gap between the frame and the outside edge of the tile.



#### LAST STEP

For any appliance using legs or leveling bolts, place a load spreading disc beneath each leg to prevent pressure cracks.

**\*NOTE:** Modular and substrate panels are provided in 12" strips for boxing and shipping purposes. Once assembled, modular panels bearing the weight of the stove legs may settle into deep pile carpet. This is common with heavy stoves placed on thick carpet pile/padding. This will not cause noncompliance issues with the hearth pad; however, it may create a slightly noticeable unevenness in the modular panels. If this is a concern, removal of the carpet/padding and setting of the hearth pad on a hard, flat surface will eliminate the issue.